

# ProClad

LINEAR

ALUMINIUM

---

---



ALUMINIUM  
FACADE  
SYSTEMS  
POWERED BY ALSPEC



# Aluminium Façade Systems

Aluminium Façade Systems is an Australian supplier of high quality and fully compliant non-combustible aluminium facade solutions for residential and commercial applications.

We are backed and serviced nationally by ALSPEC, Australia's market-leading aluminium system specialists with 50 years' experience.

ProClad Solid and ProClad Linear provide a unique balance of performance, usability and aesthetics. Made from aluminium, an excellent cladding material for

residential and commercial applications. The material's strength provides almost limitless design possibilities for design possibilities for any commercial or residential application and buildings and makes it possible to create structures that cannot be made from wood, brick or steel.

ProClad Solid and ProClad Linear have been independently tested and certified to meet the stringent performance and safety standards set out in the CodeMark certification scheme, giving you peace of mind that these products are safe, reliable and of the highest quality.



## ProClad™ LINEAR

ProClad™ LINEAR is an intelligent aluminium interlocking facade system proudly Australian made from the raw material to the finished product. The range consists of three different profiles in various sizes and finishes which can be customised to suit any project. ProClad™ LINEAR provides a modern and aesthetically pleasing element to any facade opposed to other commercial cladding products in today's market. The range is designed and engineered in house by Aluminium Facade Systems to meet the demands of every sector in the facade industry.

The range offers the architectural industry the flexibility to select from the different profiles and finishes to meet any style from ultra modern, industrial and contemporary facades.

ProClad™ LINEAR provides confidence with the highest quality characteristics of each profile with the finest detail providing an incomparable reliability and longevity with a commitment to sustainability and our surrounding environment.

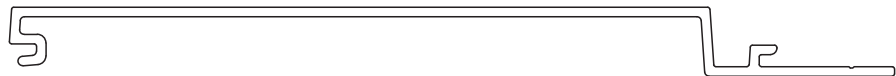
ProClad™ LINEAR passes AS4284 waterproofing test for building facades, AS1530.1 and AS1530.3 compliant tests.

With the extensive range of colours and finishes, ProClad™ LINEAR has limitless aesthetic and design options for use in applications of any scale and in any environment proving to be a preferred product due to ease of installation, maintenance and a market leading warranty.



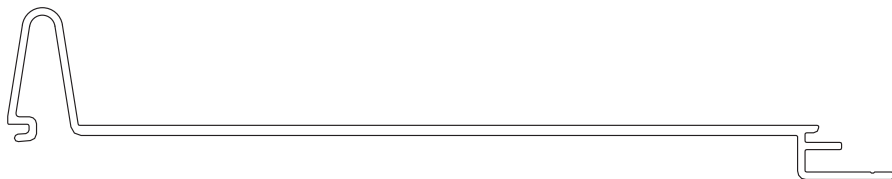
### EMPIRE

- Ultramodern wide boards with a recessed shadow in between each board
- A complete system with components for fixing and corner details
- Available in 160mm, 180mm, and 225mm widths at 6.5m lengths



### URBAN

- Striking with a sleek pronounced pleat between each board
- A complete system with components for fixing and corner details
- Available in 240mm width and at 6.5m lengths



### MANOR

- Classic weatherboard appearance that is neat and elegant
- A complete system with components for fixing and corner details
- Available in 197mm width at 6.5m lengths



*All ProClad™ LINEAR products can be custom designed to suit any project*





## ProClad™ Technical Data Sheet

| Properties                             | Values                                 |
|--|--|
| Alloy                                  | 6063                                   |
| Temper                                 | T5                                     |
| Standard Thickness                     | 2.5mm - 3.0mm                          |
| Painted Weight                         | 1.673 kg/m                             |
| Raw Density                            | 2700 kg/m <sup>3</sup>                 |
| Young's Modulus (E)                    | 68.3 GPa                               |
| Tensile Strength (25°)                 | 220 MPa                                |
| Yield Strength (25°)                   | 180 MPa                                |
| Shear Strength                         | 117 MPa                                |
| Fatigue Strength                       | 69 MPa                                 |
| Elastic Modulus                        | 69 MPa                                 |
| 0.2% Proof Stress                      | >170 MPa                               |
| Elongation                             | 12%                                    |
| Linear Thermal Expansion               | 2.4mm/m at 100° temperature difference |
| Melting Range                          | 640-660°C                              |
| Electrical Conductivity - Equal Volume | 32 MS/m                                |
| Electrical Conductivity - Equal Weight | 105 MS/m                               |
| Thermal Conductivity                   | 201-218 W/m.K                          |
| Sound Absorption Factor                | 0.05 NCR                               |
| Sound Reflection                       | 95%                                    |

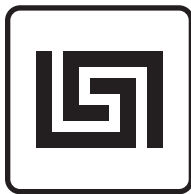
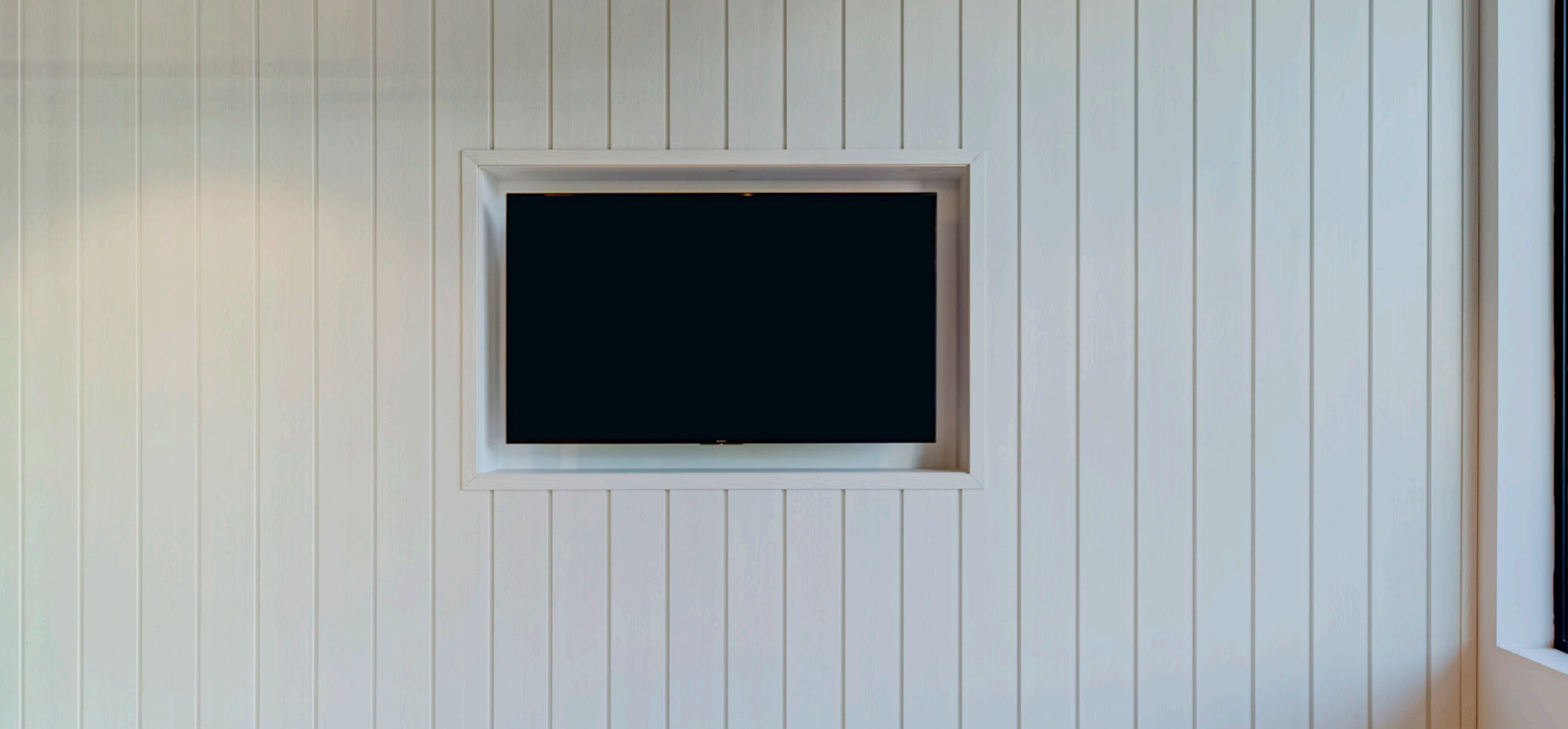
*ProClad™ LINEAR has passed A4284 testing for building facades.*

## Fire Performance

| Test Standard      | Result |   |
|--------------------|--------|---|
| AS1530.1           | PASS   |   |
| AS1530.3           | PASS   |   |
| Ignitability Index | 0      | ✓ |
| Heat Evolved       | 0      | ✓ |
| Spread of Flame    | 0      | ✓ |
| Smoke Developed    | 1      | ✓ |

*ProClad™ LINEAR is Bal 19 compliance achievable in accordance with fixing guidelines.*

*ProClad™ LINEAR has passed AS1530.1 or similar.*



#### Interlocking Facade System

ProClad™ LINEAR is a modern facade alternative to other commercial cladding products. The product range has been architecturally designed and engineered by experienced commercial facade professionals to meet the demands of today's facade industry.



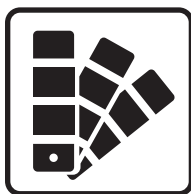
#### 100% Non-Combustible

ProClad™ LINEAR products are made of 100% solid aluminium which is non-combustible meeting AS1530.1 and AS1530.3. It is also BAL 19 compliance achievable in accordance with fixing guidelines.



#### Intelligent Installation Design

ProClad™ LINEAR profiles have been intelligently designed to provide excellent workability with matching ancillaries to cover every detail of the facade ensuring a fast and efficient installation.



#### Pre-Finished System

Pre-finished product with the option of powder coating, anodising, including state of the art production techniques for woodgrain finishes. ProClad™ LINEAR finishes are guaranteed to perform and outlast to highest standards.



#### Proudly Australian Made

ProClad™ is a 100% Australian owned, designed and manufactured product, which contributes to its outstanding quality and fast lead times. ProClad™ LINEAR proudly supports local and aids all aspects of the Australian economy.



#### Environmentally Friendly

ProClad™ LINEAR solid aluminium is a 100% recyclable product putting our environment first from production to installation.



#### Minimal Fabrication

ProClad™ panels can be ordered to custom lengths which eliminates additional fabrication. Panels are simply interlocked and tightened, then fixed. This also optimises usability and decreases waste.



#### Premium Aesthetics

ProClad™ LINEAR profiles all have their own unique look with modern shadow profiles, traditional weatherboard profiles or industrial style standing seam rounding of with the option of any anodised, powdercoat or wood grain finish.



#### Industry Leading Warranty

ProClad™ LINEAR provides an industry leading 25 year product warranty. Clients can be confident that their facade will withstand the test of time.

## Colours

ProClad™ LINEAR is available in powder-coated, anodised and wood grain colour finishes. Custom colours are available on request.

### Powder Coated



Pearl White



Citi Pearl



Champagne Pearl



Anodic Natural



Precis Natural Shimmer



Eternal Silver



Charcoal



Charcoal Pearl



Precis Pure Gold



Sable Medium Bronze



Bronze Pearl



Precis Dark Bronze



French Champagne



Sable Brilliance



Titanium Pearl



Asteroid Pearl



Sable Bass



Ebony



Monument



Precis Black Ink



Brilliant Yellow



Lycra Strip



Sensation



Lobster



Viper Green



Shamrock Green



Bondi Blue



Jaybird

**Colour Disclaimer:** Colour representations in this brochure are for illustrative purposes only. Full range of Interpon/Dulux paint finishes are available. Please contact your AFS representative for details.

# Anodised



Satin Spanish Silver



Satin Stainless Grey



Satin Silver Grey



Satin Slate Grey



Satin Charcoal Grey



Satin Sandstone



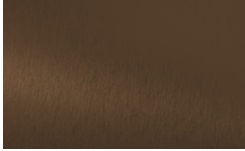
Satin Quarry Beige



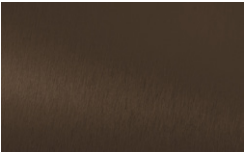
Satin Pale Bronze



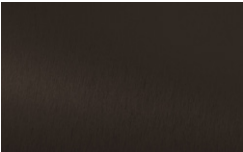
Satin Light Bronze



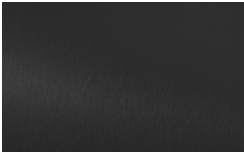
Satin Medium Bronze



Satin Dark Bronze



Satin Espresso



Satin Black



Satin Champagne



Satin Doeskin

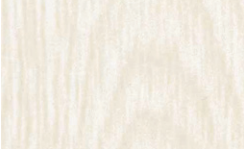


Satin Oriental Gold



Satin Venetian Gold

# Wood Grain



White  
Ash - HD305  
Oak - HD805  
Cedar - HD505



Grey  
Ash - HD301  
Oak - HD820  
Cedar - HD520



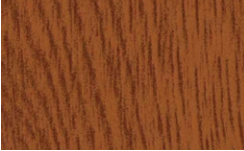
American  
Ash - HD370  
Oak - HD870  
Cedar - HD570



Golden  
Ash - HD312  
Oak - HD812  
Cedar - HD512



Western Red  
Ash - HD310  
Oak - HD810  
Cedar - HD510



Red  
Ash - HD813  
Oak - HD813  
Cedar - HD513



Royal  
Ash - HD332  
Oak - HD832  
Cedar - HD532



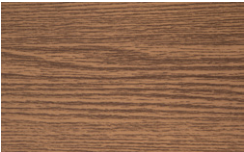
Brown  
Ash - HD321  
Oak - HD821  
Cedar - HD521



Ebony  
Ash - HD390  
Oak - HD890  
Cedar - HD590



Blonde  
Ash - HD330  
Oak - HD821  
Cedar - HD530



Australian  
Ash - HD388  
Oak - HD888  
Cedar - HD588

**Colour Disclaimer:** Colour representations in this brochure are for illustrative purposes only. Full range of Interpon/Dulux paint finishes are available. Please contact your AFS representative for details.





**ALUMINIUM  
FACADE  
SYSTEMS**  
POWERED BY ALSPEC

Address: 11 Interchange Drive,  
Eastern Creek NSW 2766  
PO Box 262,  
Horsley Park NSW 2175  
Sales: 1300 252 523  
ABN: 52 641 120 658  
[aluminiumfacadesystems.com.au](http://aluminiumfacadesystems.com.au)

## AluSpace Showrooms

### AluSpace Sydney

Address: 100 New South Head Rd,  
Edgecliff NSW 2027  
Phone: 02 9834 9500  
Email: [alospace@alspec.com.au](mailto:alospace@alspec.com.au)

### AluSpace Adelaide

Address: 1 Pope Court, Beverley SA 5009  
Phone: 08 8150 6960  
Email: [adelaidealospace@alspec.com.au](mailto:adelaidealospace@alspec.com.au)

### Brisbane Design Centre

Address: 66 Merivale Street,  
South Brisbane, QLD 4101  
Phone: 07 3089 4900  
Email: [brisbane@alspec.com.au](mailto:brisbane@alspec.com.au)

## Aluminium Facade Systems Offices

### Brisbane

Address: 8-22 Jutland Street,  
Loganlea QLD 4131  
Phone: 07 3089 4900  
Email: [brisbane@alspec.com.au](mailto:brisbane@alspec.com.au)

### Victoria

Address: 26-40 Pound Road West,  
Dandenong South VIC 3175  
Phone: 03 8787 6333  
Email: [melbourne@alspec.com.au](mailto:melbourne@alspec.com.au)

### Perth

Address: 30 Holder Way, Malaga WA 6090  
Phone: 08 9209 9100  
Email: [perth@alspec.com.au](mailto:perth@alspec.com.au)

### Canberra

Address: 1/28 Sheppard St Hume ACT 2620  
Phone: 1300 252 523  
Email: [canberra@alspec.com.au](mailto:canberra@alspec.com.au)