



**AUTOMATED
CHAINWINDERS**
2024.03 v1.5

alspec®
EVERYTHING ALUMINIUM
& HARDWARE

AUTOMATED CHAINWINDERS

"The easy way to Plug&Play" automate awnings with Alspec's electric chainwinder solutions.

Alspec's automated hardware provides a complete range of automated hardware for residential and commercial applications.

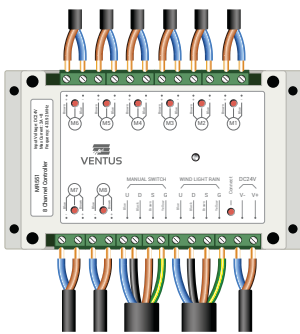
Running on a 24 Volt DC 'Plug & Play' system for added simplicity & reliability, the Automated Chainwinders are suitable for use with awning windows and provides an easy to install system that does not require an electrician to connect together.

Suiting a variety of chainwinder applications Alspec's automated hardware can be used in floor to ceiling systems as well as those hard to reach areas.

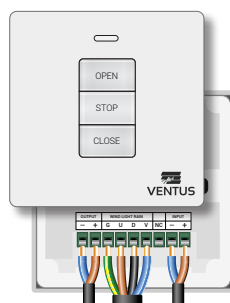
PLUG&PLAY SYSTEM

The Alspec 'Plug & Play' system consists of a simple range of controllers, switches and motors all connected via quick connect plugs.

The 'Plug & Play' system offers control for up to 8 windows and capable of operating electric chainwinders all at the same time.



MR551
8 Channel Controller



MR536
1 Channel Controller



2 Pin Plugs
Power and Motors



4 Pin Plugs
Accessories

WINDOW OPERATORS

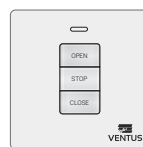
A chainwinder is chosen based on the size and requirements of each window. Each channel on the controller can manage a single chainwinder or two chainwinders simultaneously using a Sync Lead with exception of the Twin Chainwinder.

POWER SUPPLY

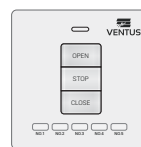
Running on 24V DC, the system by design only requires a GPO or regular mains power outlet at the reach of the supplied power pack to plug into. Not needing an electrician to wire up all the hardware components is a key benefit of the Alspec 'Plug & Play' system.

REMOTES & CONTROLS

One controller can be connected to an infinite number of switches and remotes, allowing you to put the controls where you want for absolute convenience.



WT211
1-Channel
wireless
wall mounted
switch



WT215
5-Channel
wireless
wall mounted
switch



RT111
1-Channel
wireless
remote
control



RT1116
16-Channel
wireless
remote
control

AUTOMATED CONTROLS

A Wind Light Rain Sensor can be added to offer an automatic control when the weather turns undesirable. The system also alternatively allows to connect into the existing Building Management System (BMS) or C-BUS.



	SCE100S SHORT SINGLE	SCE300S SMALL SINGLE	LCD300 LARGE SINGLE	TCE300 LARGE TWIN
VOLTAGE	24V DC	24V DC	24V DC	24V DC
PUSH/PULL FORCE	250N	250N	400N	800N
CHAIN PROJECTION	100mm	300mm	300mm	300mm
WINDOW HEIGHT (MAX.)	1500mm	1500mm	1800mm	1800mm
WINDOW WIDTH (MAX.)	1200mm	1200mm	1200mm	2400mm
SASH WEIGHT (MAX.)	< 25kg	< 25kg	< 40kg	< 80kg
CHAIN	304 Stainless Steel	304 Stainless Steel	304 Stainless Steel	304 Stainless Steel

COLOURS

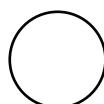
(Body colour only, excludes chain, cable & brackets)



CLEAR
ANODISED



SATIN
BLACK



PEARL
WHITE



CUSTOM
COLOURS
AVAILABLE

TESTING



Performance tested to 30,000 cycles

**IP32
RATED**

When installed according
to installation instructions



**OPERATES ON ALL
BMS & C-BUS**



C TICK Certified

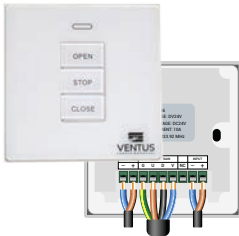


WATCH OUR VIDEO:
VENTUS AUTOMATED HARDWARE

YouTube  **Alchin Long Group**

AUTO HARDWARE COMPONENTS

All the hardware you need and no confusion. The Alspec range encompasses control units at the heart of the system, power supply, control pads and wireless remotes, automated sensors, leads, extensions, accessories and the window operator motors themselves. Alspec also provides compressive wiring diagrams to aid in the 'Plug & Play' installation.



MR536
1-Channel control unit



MR551
8-Channel control unit



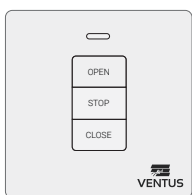
POWER PACK 2.5AMP
Mains power 240V AC
to 24V DC



POWER PACK 10AMP
Mains power 240V AC
to 24V DC



21UP2403
UPS Battery backup power



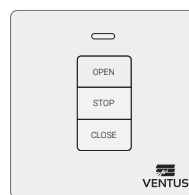
MS541
Wired wall mounted
switch



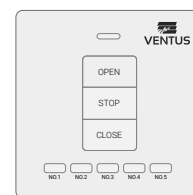
RT111
1-Channel wireless
remote control



RT1116
16-Channel wireless
remote control



WT211
1-Channel wireless
wall mounted switch



WT215
5-Channel wireless
wall mounted switch



WLR001
Wind Light Rain
Sensor



C2075F01
2-Core female plug
100mm



C2075M01
2-Core male plug 100mm



C2075F3
2-Core female plug 3m



C2075M3
2-Core male plug 3m



C2075FM3
2-Core female-male plug
3m



C2075FM10
2-Core female-male plug
10m



C2075M10
2-Core male plug 10m



C405F3
4-Core female plug 3m



C405M3
4-Core male plug 3m



C405FM3
4-Core female-male plug
3m



S102P
Chainwinder SYNC Lead



C1F2M TEST LEAD
On-site test unit



SCE100s
Electric Winder 100mm chain



SCE300s
Electric Winder 300mm chain



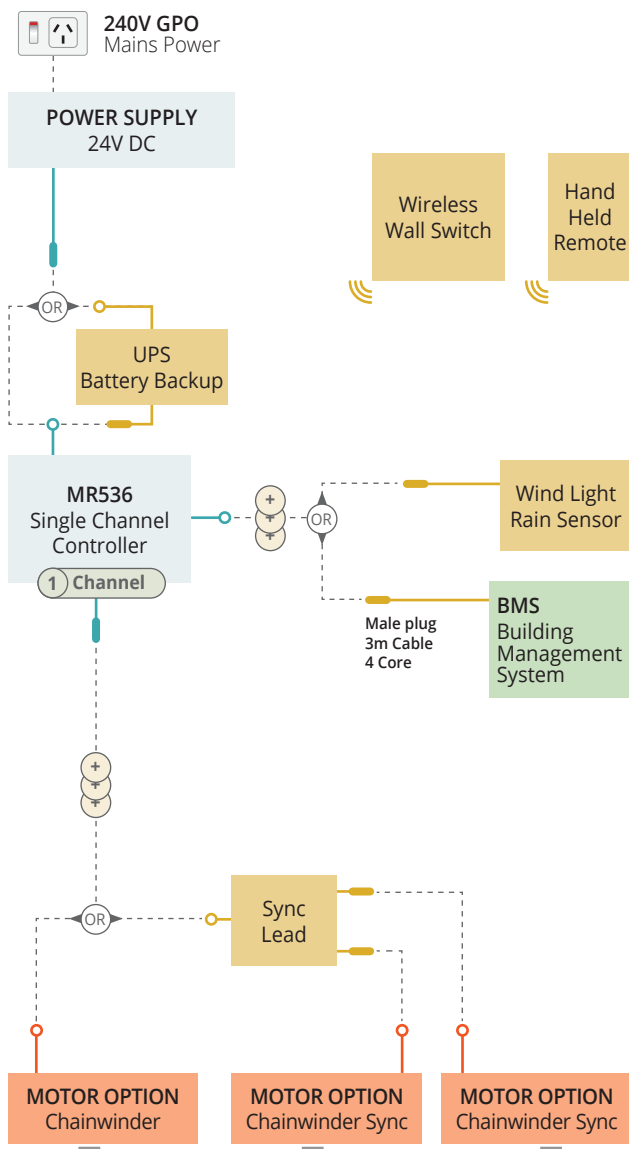
LCD300
Electric Winder - 300mm chain



TCE300
Twin chain electric winder - 300mm chain

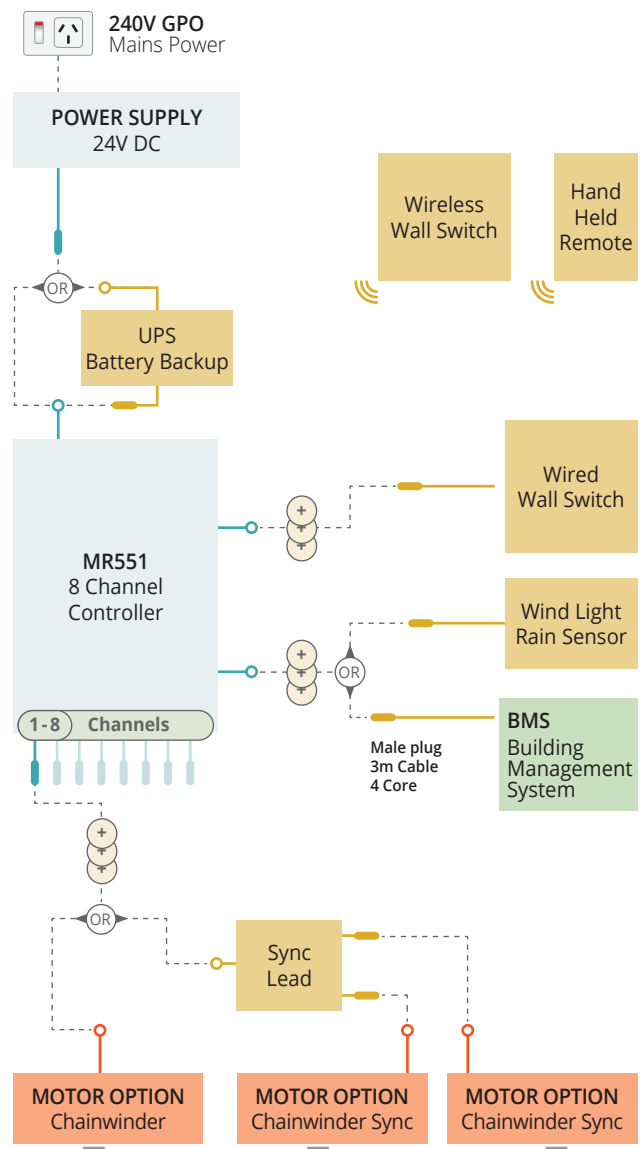
QUICK LAYOUT GUIDE

1 CHANNEL LAYOUT



8 CHANNEL LAYOUT

(UP TO 8 WINDOWS FROM ONE CONTROLLER)



SELECTION REQUIREMENTS:

BASE/MINIMUM

For the system to work, these are the base required hardware.

EXTENSION OPTIONS

These items are added if required.

MOTOR OPTION

Chainwinder best suited for your window size & weight.



ADDITIONAL 'PLUG & PLAY' EXTENSION LEADS AVAILABLE



EITHER/OR OPTION



AVAILABLE CHANNELS
Repeat wiring per channel as required

IMPORTANT:

- System and Motors operate on 24V DC

1-4 Motors require
2.5amp Power Pack

5+ Motors require
10amp Power Pack

Note: TCE300 Twin Chainwinder uses two motors.

- Repeat wiring for each channel/window as required
- For Sync'd Chainwinders, utilise channels 1, 3, 5, 7
- TCE300 Twin Chainwinder **not available** for Sync
- Comprehensive electrical drawings and component lists are available on the Alspec website.

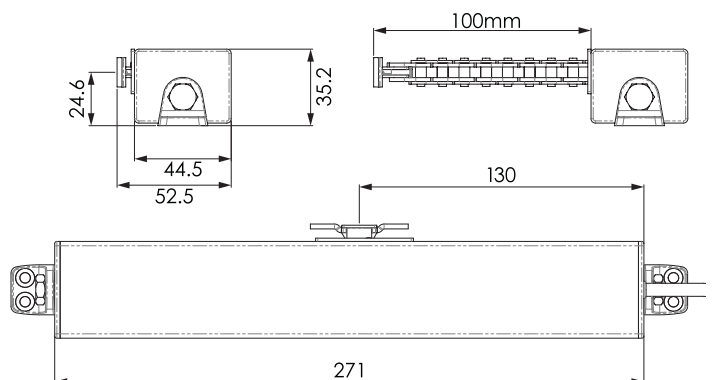


SCE100S | SHORT SINGLE ELECTRIC CHAINWINDER

PRODUCT DETAILS

VOLTAGE	24V DC
PUSH/PULL FORCE	250N
CHAIN PROJECTION	100mm
WINDOW HEIGHT (MAX.)	1500mm
WINDOW WIDTH (MIN - MAX.)	350mm - 1200mm
CHAIN	304 Stainless Steel
CODE	1345591

The Alspec SCE100s features a short 100mm chain projection. It is best suited for small and light weight awning windows up to 1200mm wide by 1500mm high. Capable of producing 250N of force, the electric chainwinder can operate a window up to 25kg in weight.

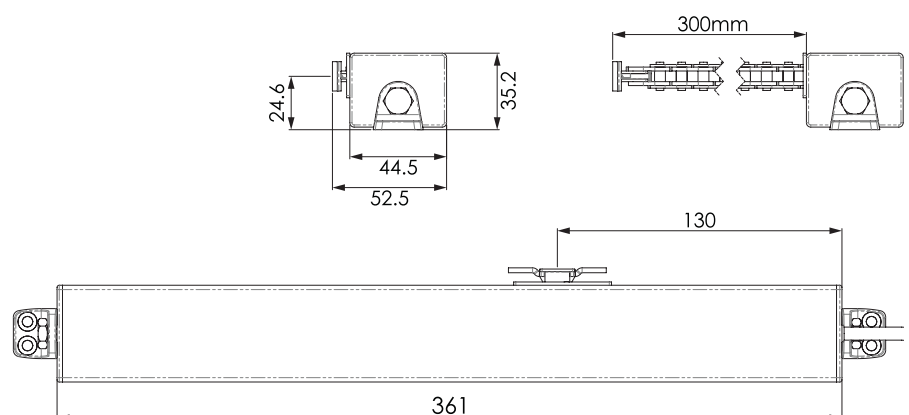


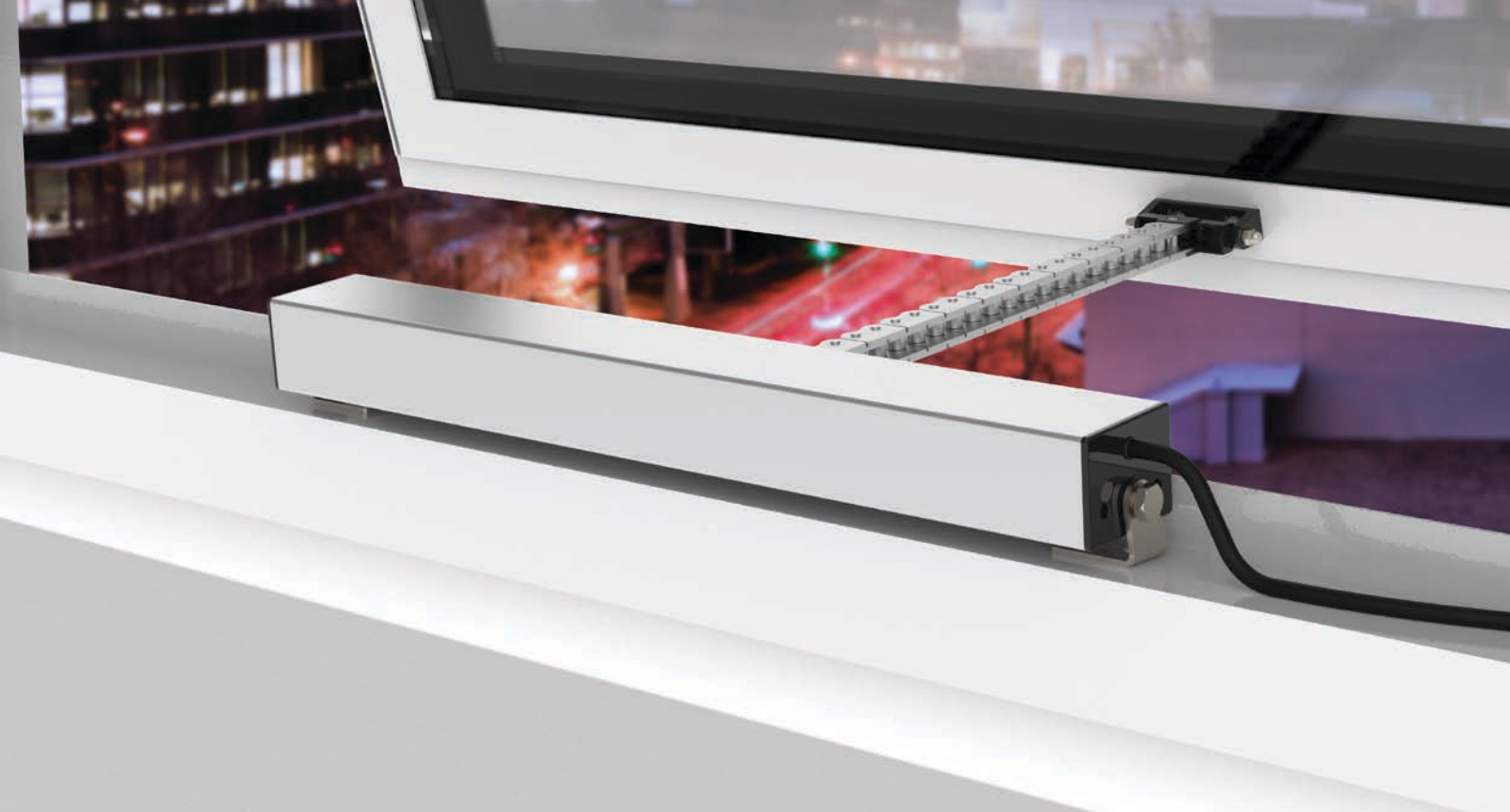


SCE300S | SMALL SINGLE ELECTRIC CHAINWINDER

PRODUCT DETAILS	
VOLTAGE	24V DC
PUSH/PULL FORCE	250N
CHAIN PROJECTION	300mm
WINDOW HEIGHT (MAX.)	1500mm
WINDOW WIDTH (MIN - MAX.)	350mm - 1200mm
CHAIN	304 Stainless Steel
CODE	1345590

The Alspec SCE300s offers a chain projection up to 300mm. Suited for small, light weight awning windows up to 1200mm wide by 1500mm high, it is capable of producing 250N of force operating a window up to 25kg in weight.



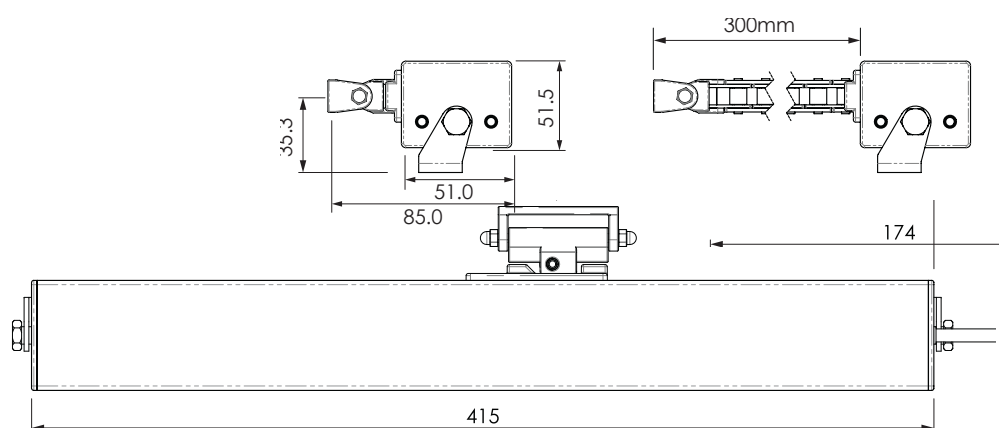


LCD300 | LARGE SINGLE ELECTRIC CHAINWINDER

PRODUCT DETAILS

VOLTAGE	24V DC
PUSH/PULL FORCE	400N
CHAIN PROJECTION	300mm
WINDOW HEIGHT (MAX.)	1800mm
WINDOW WIDTH (MIN - MAX.)	410mm - 1200mm
CHAIN	304 Stainless Steel
CODE	1345604

The Alspec LCD300 is a larger electric chainwinder featuring a 300mm chain projection and best suited for larger awning windows up to 1200mm wide by 1800mm high. Producing 400N of force, the electric chainwinder can operate a window up to 40kg in weight.



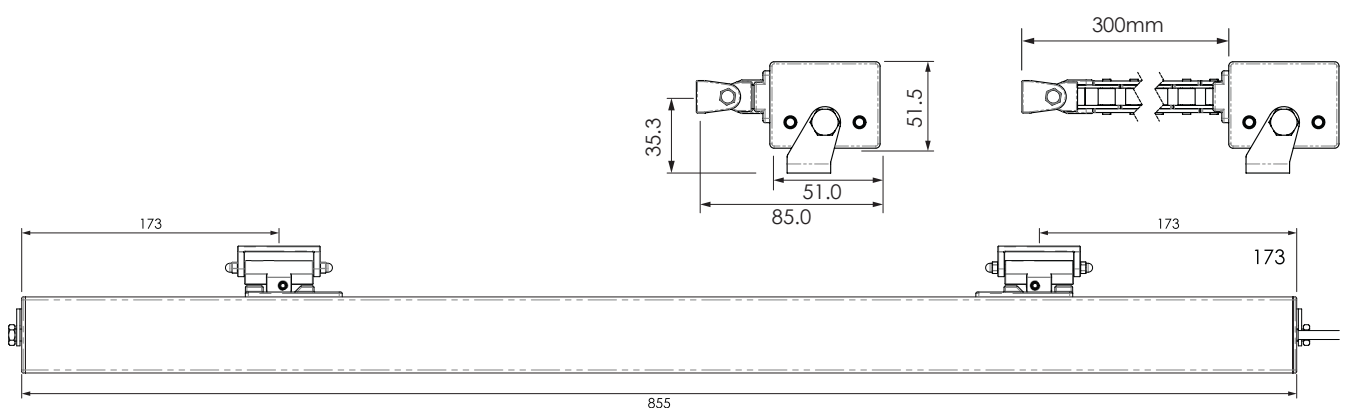


TCE300 | TWIN ELECTRIC CHAINWINDER

PRODUCT DETAILS

VOLTAGE	24V DC
PUSH/PULL FORCE	800N
CHAIN PROJECTION	300mm
WINDOW HEIGHT (MAX.)	1800mm
WINDOW WIDTH (MIN - MAX.)	850mm - 2400mm
CHAIN	304 Stainless Steel
CODE	1345601

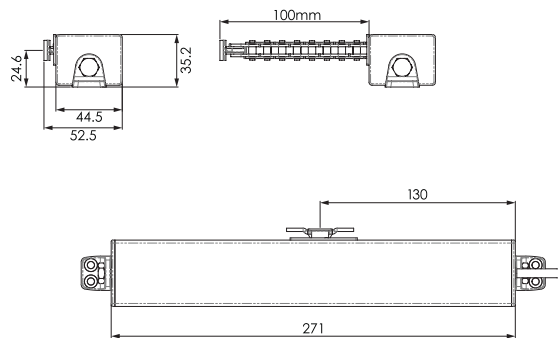
The Alspec TCE300 is our twin chain electric winder featuring a dual 300mm chain projection. It offers operation for the largest windows measuring up to 2400mm wide by 1800mm high. The winder producing up to 800N of push/pull force is able to operate a window of up to 80kg in weight.



LINE DRAWINGS

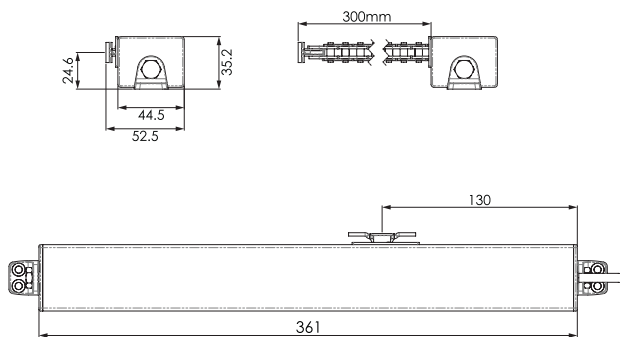
SCE100S

SHORT SINGLE
ELECTRIC CHAINWINDER



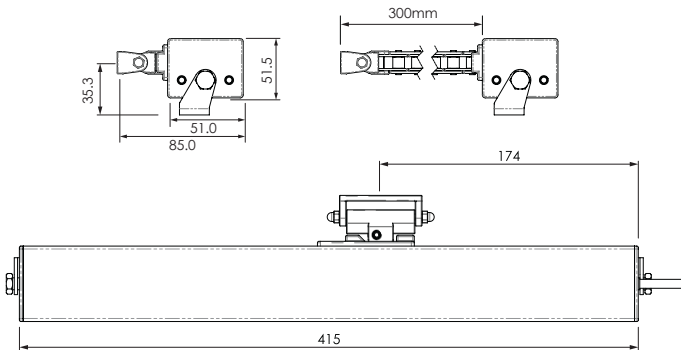
SCE300S

SMALL SINGLE
ELECTRIC CHAINWINDER



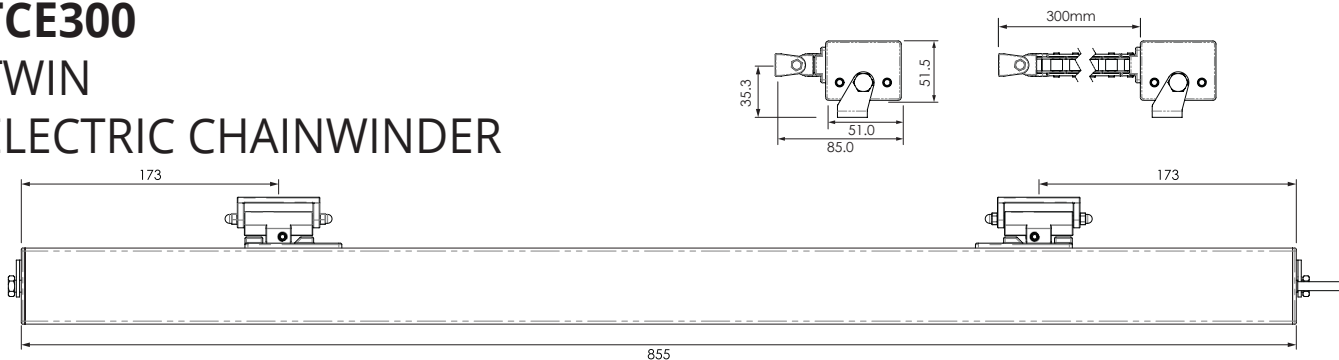
LCD300

LARGE SINGLE
ELECTRIC CHAINWINDER



TCE300

TWIN
ELECTRIC CHAINWINDER



AUTOMATED CHAINWINDERS

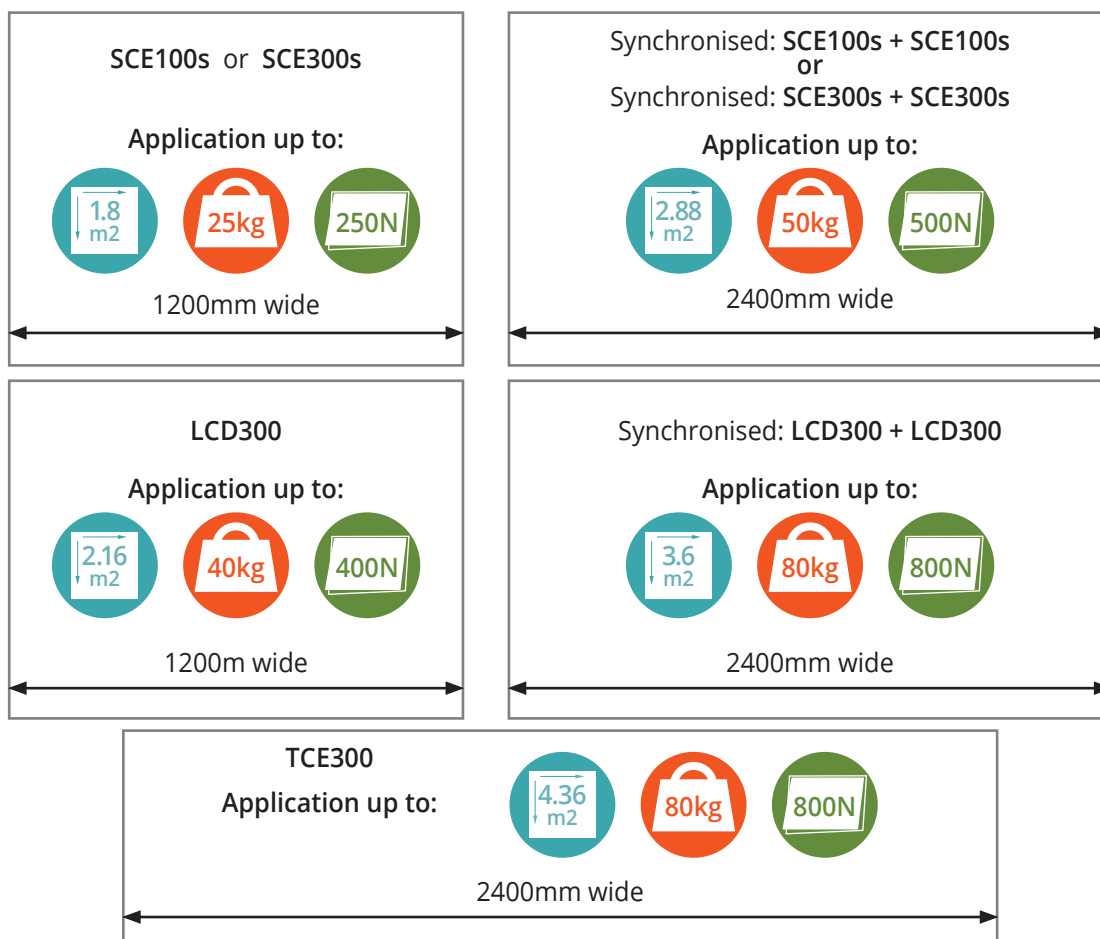


	SCE100S SHORT SINGLE	SCE300S SMALL SINGLE	LCD300 LARGE SINGLE	TCE300 LARGE TWIN
VOLTAGE	24V DC	24V DC	24V DC	24V DC
PUSH/PULL FORCE	250N	250N	400N	800N
CHAIN PROJECTION	100mm	300mm	300mm	300mm
WINDOW HEIGHT (MAX.)	1500mm	1500mm	1800mm	1800mm
WINDOW WIDTH (MAX.)	1200mm	1200mm	1200mm	2400mm
SASH WEIGHT (MAX.)	< 25kg	< 25kg	< 40kg	< 80kg
CHAIN	304 Stainless Steel	304 Stainless Steel	304 Stainless Steel	304 Stainless Steel
SYNC	SCE100S+SCE100S	SCE300S+SCE300S	LCD300+LCD300	
PUSH/PULL FORCE	500N	500N	800N	
WINDOW HEIGHT (MAX.)	1200mm	1200mm	1500mm	
WINDOW WIDTH (MAX.)	2400mm	2400mm	2400mm	
SASH WEIGHT (MAX.)	< 50kgs	< 50kgs	< 80kgs	

SYNCHRONISED refers to the addition of a synchroniser box plugged from a channel on the control box and operates two matching Automated Chainwinders through one channel simultaneously.

IMPORTANT:

Automated Chainwinders are to be used with **Non-Friction Stays**. Friction Stays should not be used.



Electric Chainwinder Wiring

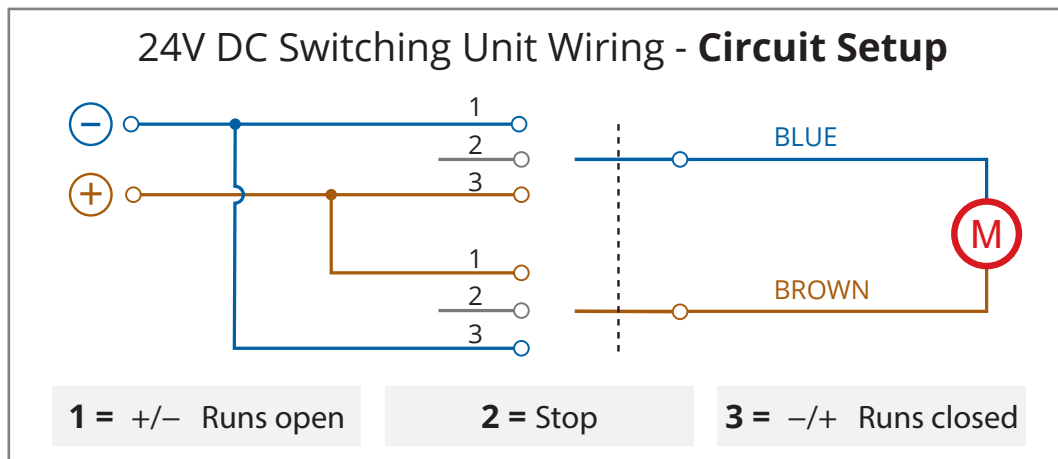
Chainwinder Switch Unit

Automated chainwinders have an internal circuit board called a switch unit. This switch unit is not polarity sensitive, allowing the unit to run in either direction dependent on the signal sent and received.

+/- Runs open

-/+ Runs closed

If you press open on a remote or a BMS, the unit will receive a +/- signal to open the motor.



Power Supply

1 to 4 Motors:
2.5 Amp Power Pack



5 to 8 Motors:
10 Amp Power Pack



Peak Amp Guide

SCE100s Standard Chain Electric	- Peak Amp 1.0 Amp – Normal 0.4-0.6 Amp
SCE300s Standard Chain Electric	- Peak Amp 1.0 Amp – Normal 0.4-0.6 Amp
LCD300 Large Chain Electric	- Peak Amp 2.8 Amp – Normal 0.4-1.0 Amp
TCE300 Twin Chain Electric	- Peak Amp 5.6 Amp – Normal 0.8-2.0 Amp

WIRING

The automation products operate off a 24V DC system and requires a minimum cable diameter of 0.75mm to reduce voltage loss over longer distances.

Synchronising Chainwinders

The Alspec's Plug and Play system allows for a faster and more cost effective method of linking single chain automated chainwinders together.

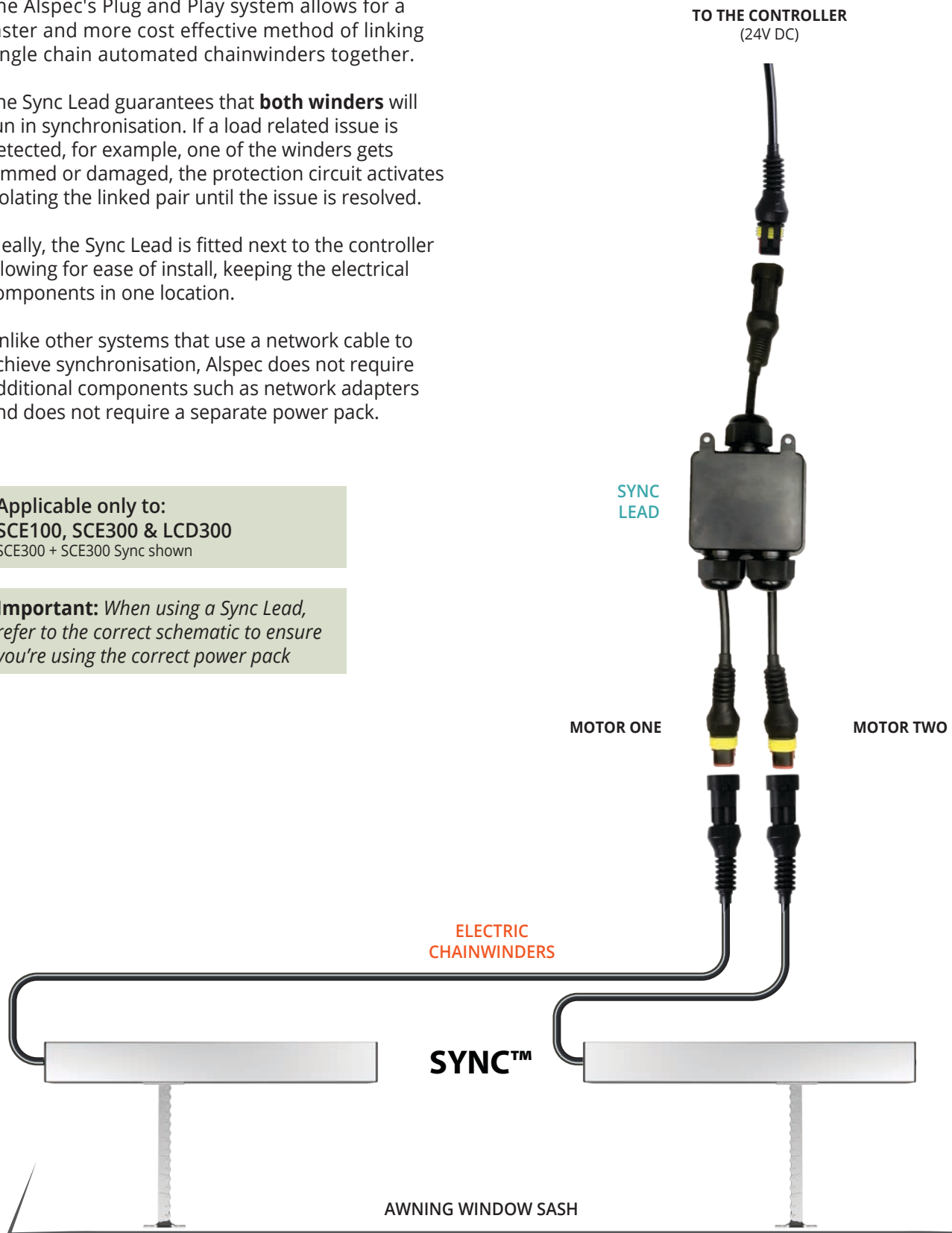
The Sync Lead guarantees that **both winders** will run in synchronisation. If a load related issue is detected, for example, one of the winders gets jammed or damaged, the protection circuit activates isolating the linked pair until the issue is resolved.

Ideally, the Sync Lead is fitted next to the controller allowing for ease of install, keeping the electrical components in one location.

Unlike other systems that use a network cable to achieve synchronisation, Alspec does not require additional components such as network adapters and does not require a separate power pack.

Applicable only to:
SCE100, SCE300 & LCD300
SCE300 + SCE300 Sync shown

Important: When using a Sync Lead, refer to the correct schematic to ensure you're using the correct power pack

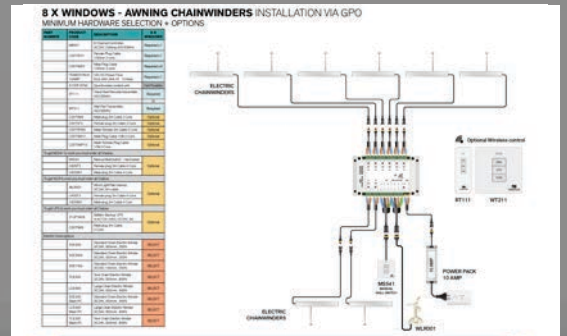


AUTOMATED CHAINWINDERS



WIRELESS CONTROL

Wireless Hand Held Remote and Wireless Wall Switch offers control from convenient locations and is easily paired to the Plug&Play Controller Unit.



EASY TO FOLLOW COLOUR CHARTS

Installation is made a breeze with the easy to follow colour chart and wiring drawings.



QUICK CONNECT PLUGS

The Alspec's Plug & Play system connects fast and simple by the use of easy quick connect plugs.



NO ELECTRICIAN WIRING

Using quick connect plugs and a 24V DC power pack plugging into a general power outlet (GPO), the system does not require a licensed electrician to connect all the components.

The easy way to **PLUG&PLAY**



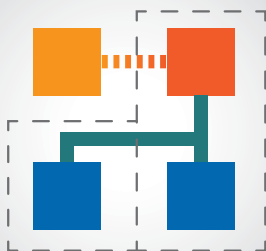
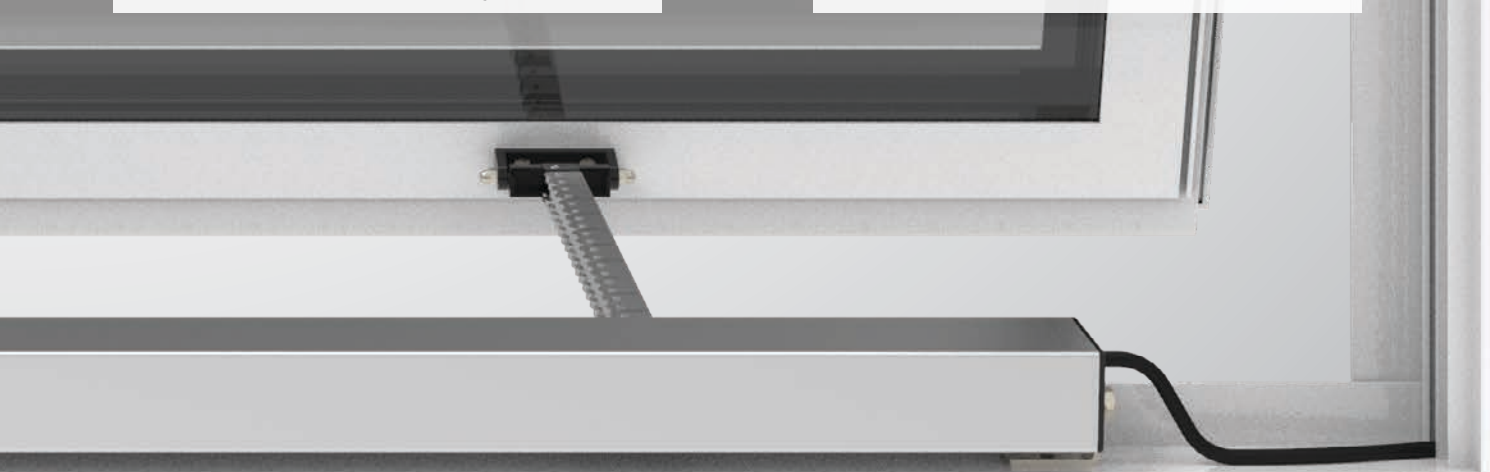
LEFT OR RIGHT CABLE SIDED

The removable end caps enable the body to flip over providing the cable to be either on the left or right hand side of the winder body.



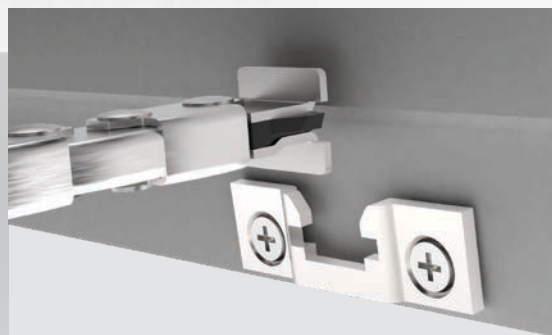
100mm & 300mm CHAIN STROKE

To help aid against child fall prevention and compliance, Auto Chainwinders offer 100mm & 300mm stroke to limit the openings.



MULTIPLE INSTALLATION OPTIONS

The system can operate either standalone or integrate with BMS, C-BUS, & GPO installations, adding for flexibility of control and installation.



EASY LINK SASH PLATE

Attaching the sash chain is fast and easy with the Easy Link Sash Plate. Mount the plate brackets and clip-lock in the sash chain. Available with SCE300s & SCE100s only.

Established in 1974, Alspec is the market leaders in the design and distribution of innovative aluminium systems to the architectural, industrial and home improvement markets.



HEAD OFFICE | 3 Alspec Place Eastern Creek NSW 2766

Phone: 02 9834 9500 | Fax: 02 9834 9532 | info@alspec.com.au

1 March 2024

Call 1300 ALSPEC (257732) | alspec.com.au

All pictures shown in this catalogue are for illustration purposes only. Actual product may vary due to product enhancement.

AUTOMATED
CHAINWINDERS