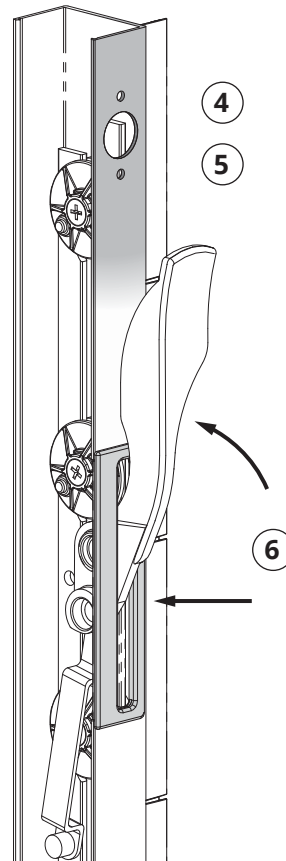
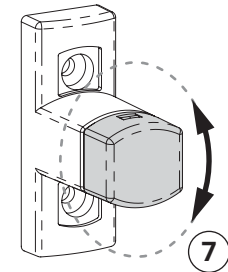


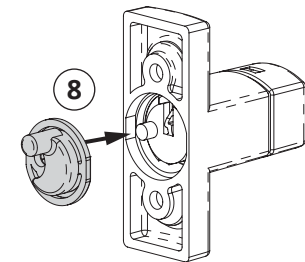
1. Pull the **Handle Lever** enough to remove **Handle Trim** from the channel yet keeping the **Louvre Blades** closed
2. Place the **Template** on the front edge of the **Gallery** and ensure the hook is pressed hard up against the top of the **Handle Cutout**
3. Mark out the three hole locations and drill to 3.5mm



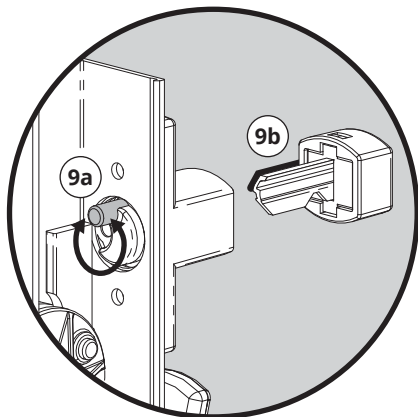
4. Enlarge the centre hole to 16mm
5. Remove any burs or swarf
6. Re-install the **Handle Trim** and close the **Gallery**



7. While holding the **Housing**, rotate the **Snib Key** until it stops.  
*Clockwise for Left-Hand side installs.*  
*Counter-clockwise for Right-Hand side installs.*

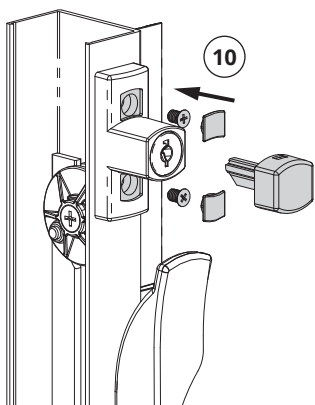


8. Install the **Cam** into the rear of the **Housing**

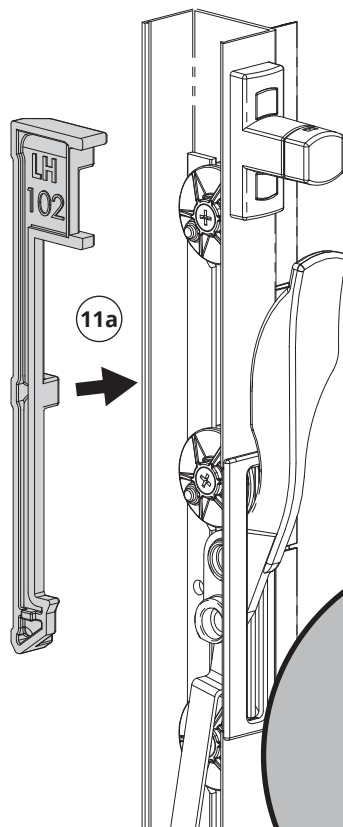


**9a.**  
Ensure that the **Plastic Pip** is located in the top position

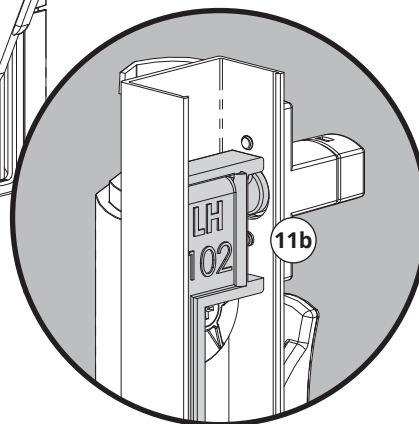
**9b.**  
And the *flat portion* of the **Snib key** is facing upwards.



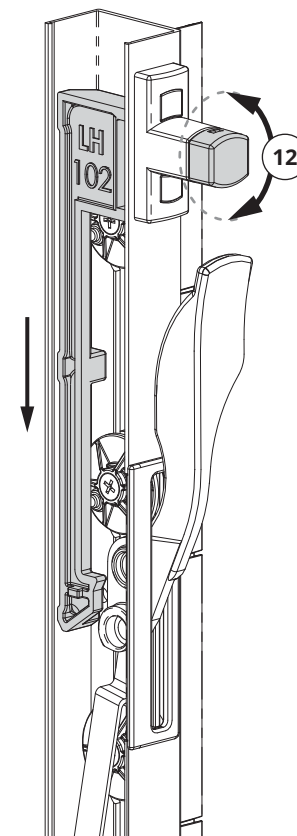
**10.**  
Screw the housing onto the Gallery, snap on the Screw Covers, and insert Snib Key



**11a.**  
Insert the **Slide Arm** into the Gallery



**11b.**  
Ensure the **Pip** sits between the legs of the **Slide Arm**



**12.**  
To lock the **Slide Arm** ready for transport, rotate the **Snib Key** 180 degrees

*Counter-Clockwise for Left-Hand  
Clockwise for Right-Hand*