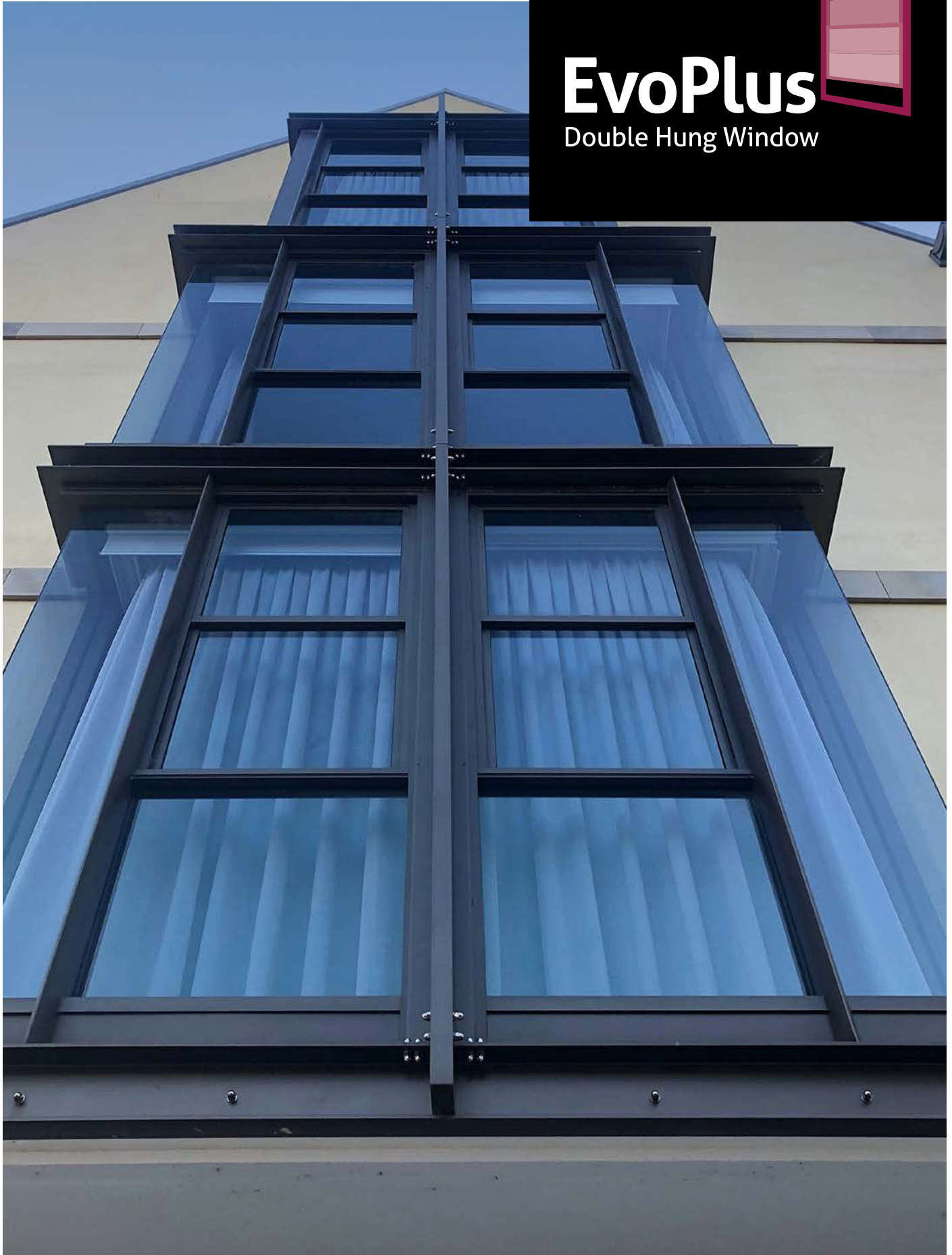


EvoPlus

Double Hung Window



EvoPlus Double Hung Window

The EvoPlus Double Hung Window offers a first-rate level of design by allowing the integration with commercial frames ecoFRAMEplus 101.6mm and McArthur Evo 101.6mm, to cater for a wide range of residential and commercial applications.

The EvoPlus Double Hung Window offers the flexibility of single and double glazing options. The EvoPlus Double Hung Window integrates a number of design initiatives unique to Alspec® such as the proprietary locking and drainage systems. Developed specifically for multi-storey use and architecturally designed housing EvoPlus Double Hung Window windows offer a superior finish.



Key Features

- Commercially designed to suit 101.6mm
- Developed specifically for multi-storey residential, schools and architecturally designed housing
- 4mm up to 10.38mm monolithic glass and up to 18.5mm double glazed units
- Superior weather performance
- Minimal processing, cost effective and simple fabrication

Technical Specifications

Frame Dimensions		Maximum Product Performance		Glazing Details	
Option 1	101.6mm x 44.5mm (W x H)	SLS (Pa)	1000	Single Glazed	4 - 10.38mm
Option 2	101.6mm x 50mm (W x H)	ULS (Pa)	5000	Double Glazed	17.5 - 18.5mm
		Water (Pa)	300	Compatible Systems	
Maximum Recommended Sizes		Thermal Performance		ecoFRAMEplus 101.6mm	
Max Sash Height	1191mm	Uw range SG	4.9 - 6.4	McArthur Evo 101.6mm	
Max Sash Width	1200mm	SHGC range SG	0.31 - 0.57		
Max Sash Weight	20kg	Uw range DG	3.7 - 4.5		
		SHGC range DG	0.22 - 0.53		

Typical Configurations

